



Modelaine Amblard

# Modelaine Amblard

Born in 1998 in Port-au-Prince (Haiti), Modelaine Amblard lives and works in Lyon. Her pictorial work revolves around hybrid figures through which she explores psychological mechanisms and the invisible logics of human behavior.



Acceptation lunaire, 2025, acrylique sur toile, 92 x 65 cm

I am interested in those moments when an individual breaks free from the automatism of daily life and confronts themselves, in a fleeting instant.

My work explores the invisible forces that run through them: influences, contradictions, conditionings, and internal logics that shape their decisions.

My paintings are the material translation of these dynamics, which I seek to make perceptible without representing them directly, through altered and absurd figures. Ideas emerge to me as clear and spontaneous mental images, whose composition is immediately legible.

I then develop them through painting, giving them a material existence and revealing their universal dimension.



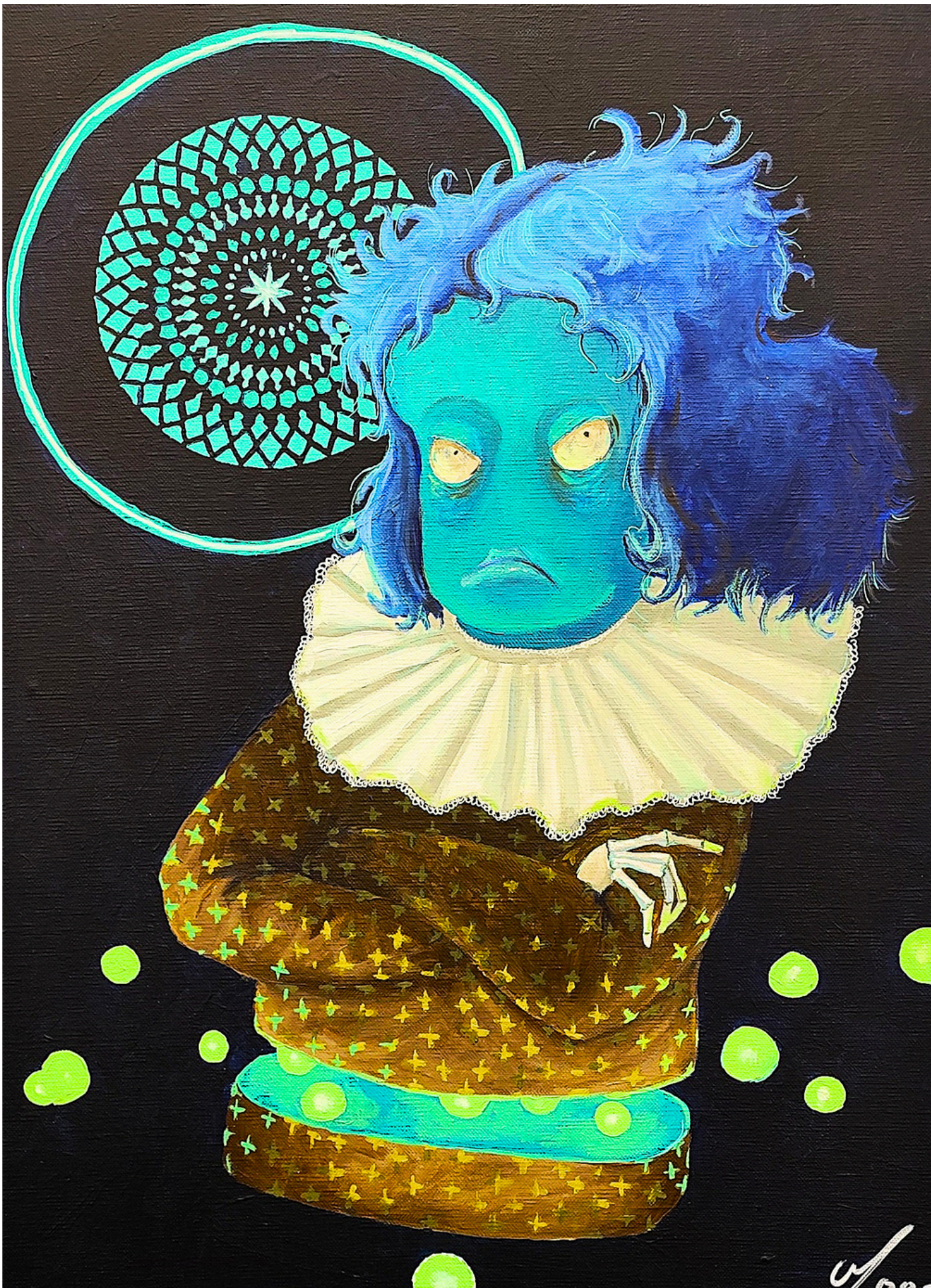
Beauté antérieure, 2025, acrylique sur toile, 65 × 56 cm

## Les Scories

In the series Les Scories, I draw from my own flaws, observed and identified, to give them a pictorial form. Each figure becomes the embodiment of an intimate fault that extends beyond the personal sphere to reach a more universal experience.



Les aveugles, 2026, acrylique sur toile, 65 x 56 cm



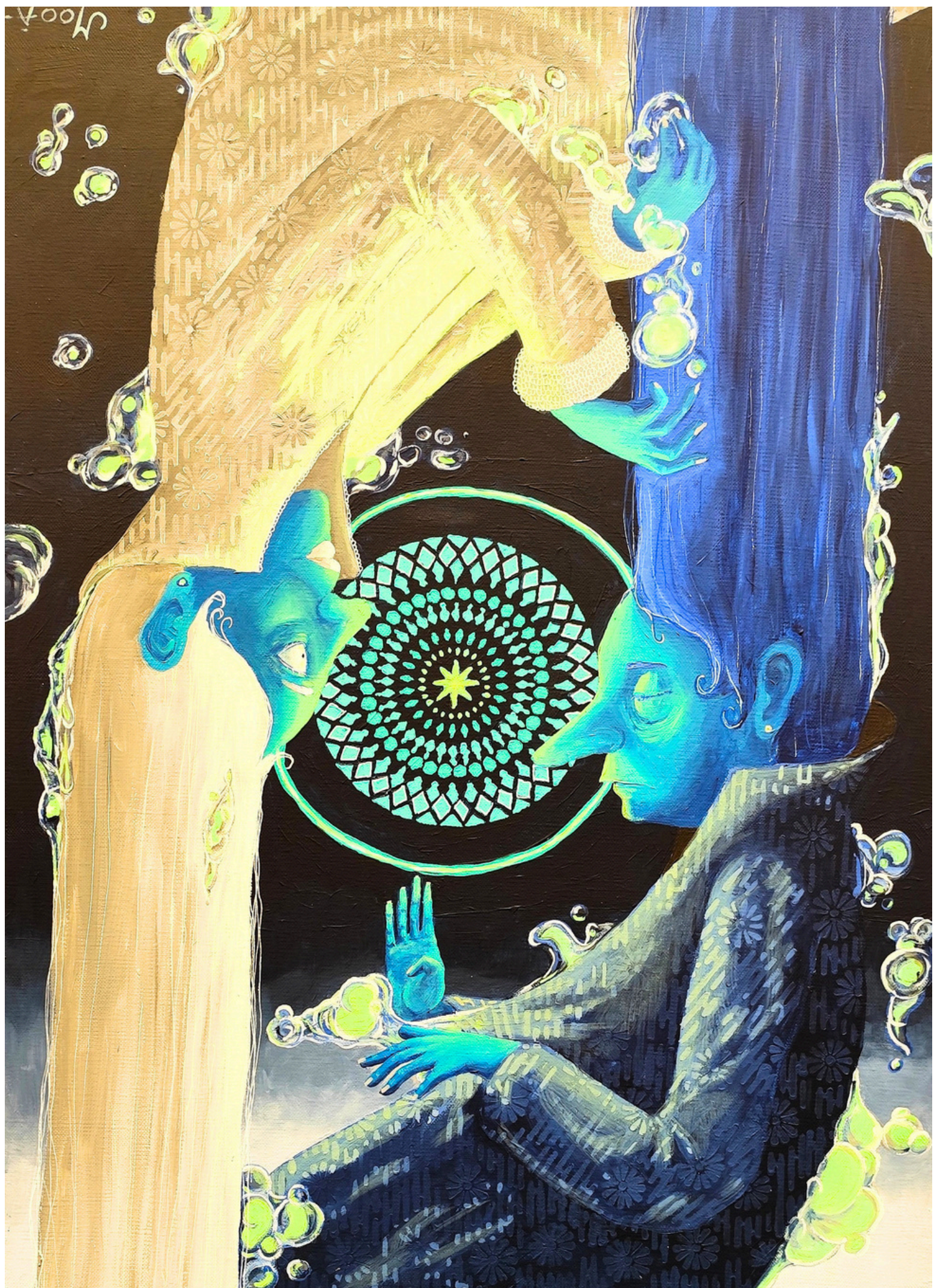
La moue, 2025, acrylique sur toile, 65 x 56 cm



Grandir, 2025, acrylique sur toile, 65 × 56 cm



Le goût du mépris, 2025, acrylique sur toile, 65 × 56 cm



Duo cosmique, 2025, acrylique sur toile, 65 x 56 cm

## **AWARDS**

2024 — Winner of the competition Dessine-moi un homard

## **COLLECTIONS**

2025 — Côte SAS, 9 works in private collection

2024 — Artothèque du Grésivaudan, public collection

## **EXPERIENCE**

2025 — Assistant for the exhibition Mermerd, Jean Jullien, Galerie Masurel, Lyon

## **EDUCATION**

Diploma in Drawing Practice, École Émile Cohl, Lyon

BA Year 1 Art History and Archaeology, University of Lille (remote)

Study stay in Florence, immersion in the tradition of Renaissance old master painters

## **SOLO EXHIBITIONS**

2024 — Ceux qui continuent, Galerie Omart, Lyon

## **RESIDENCIES**

2025 — La métamorphose des mondes, Airt de Famille, Centre d'échange Perrache, Lyon

2024 — Airt de Famille Act 3, Galerie des Terreaux, Lyon

Modelaine Amblard

Lyon, France | +33 6 95 18 67 23 | [modelaineamblard.artiste@gmail.com](mailto:modelaineamblard.artiste@gmail.com) |

[www.modelaineamblard.com](http://www.modelaineamblard.com) | [@modelaineartist](https://www.instagram.com/modelaineartist)



Cheveux de traverses, 2025, acrylique sur toile, 100 × 80 cm